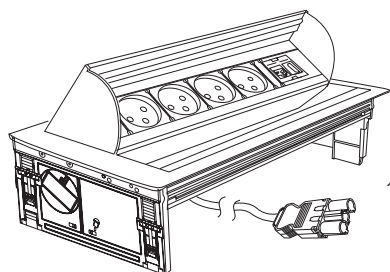


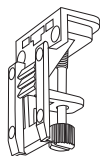


⚠ ATTENTION: Read the instructions prior to installation.

Components:

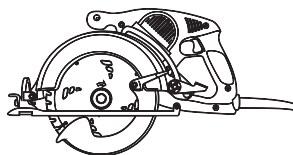


1 x Innera Molla

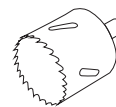


4 x Locking Clips

Tools required:



Power Saw



Hole Cutter

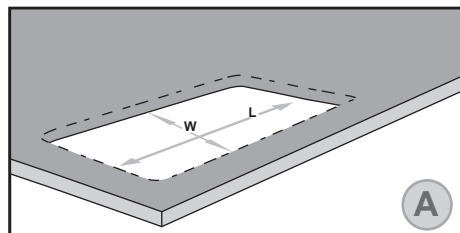


Power Drill

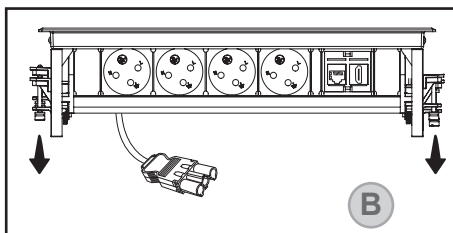
Critical safety information:

- Prior of use, please examine and verify that the product is not defected. Please do not install or operate if there is a defect of any kind.
- If in any case you are facing misunderstanding of installation procedure, the installation should be carried out by certified electrician
- Make sure you are installing the product on smooth straight surface. Do not install in any case that the surface is not straight or if there are levels differences.
- Make sure water will not penetrate into the unit. In any case please make sure you are installing the unit, where proper leakage protection device is connected.

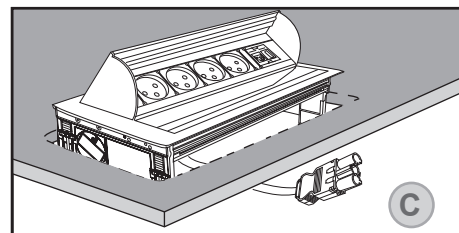
Installation:



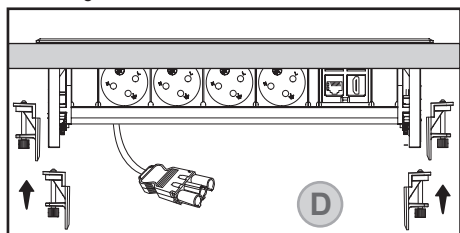
Drill hole into the surface according to the INSTALLATION TABLE on page 2. Please verify your purchased item's model No and drill the hole according to the model's cutout dimensions.



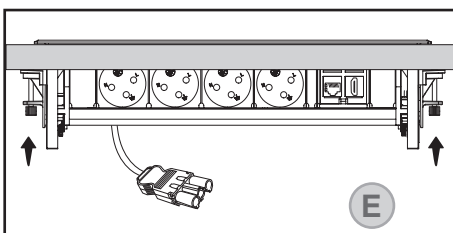
Remove the 4 locking Clips by pulling & Pushing it down the rail before you are Inserting the Innera Molla into the hole.



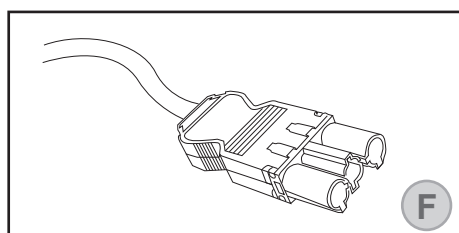
Insert the Innera Molla into the hole.



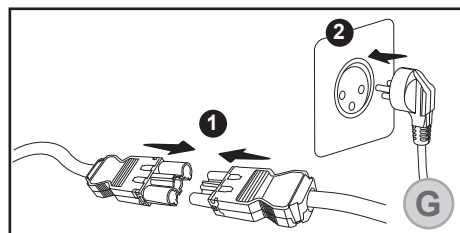
Install the 4 locking Clips on the rails and push it up to the surface.



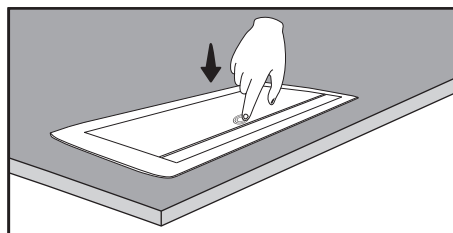
Tight the screws on the locking Clips to the surface and verify the Innera Molla is firmed and cannot be moved.



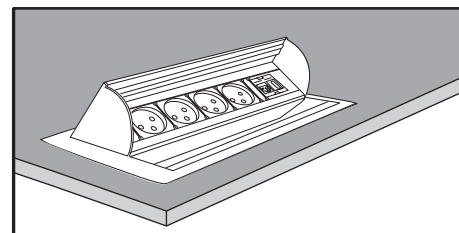
Connect the GST Male connector to power and the Innera Molla is ready for use.



REMARK: In case you need to connect the Innera Classic to a standard socket, you should buy a **starter cable** separately which not included in this Kit and connect it according to illustration above.



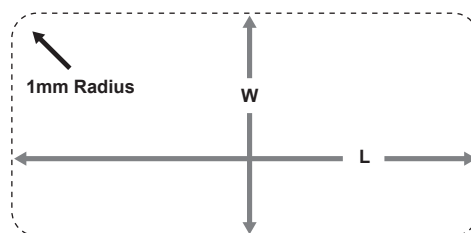
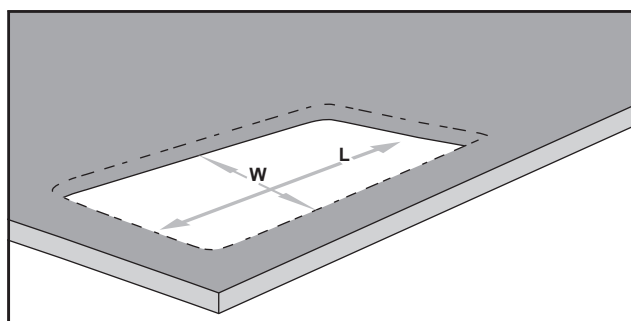
For use, press the cover.



The Innera Molla is ready for use.

Cleaning:

The product can be cleaned by a soft and dry fabric. Please do not use moisture, abrasives materials, solvents or any detergents which can be conductive



INSTALLATION TABLE:

Catalog No	Model	Description	Color	Cutout Hole	
				Length mm (L)	Width mm (W)
0727363258335	IM-62C	2 IL sockets, 2.4A USBx2 Charge, 4 Keystones	Black	361	164
0727363258328	IM-63	3 IL sockets & 6 Keystones	White	361	164